


User Guide... Exam Mode within File Launch

Why would you want to launch files in Exam Mode?

- To send media files out in a controlled manner
- To comply with rules set down by examination boards

How to launch files in Exam Mode:

Click on the 'File' button  on the right hand side of the screen, or the icon  on the tool bar.

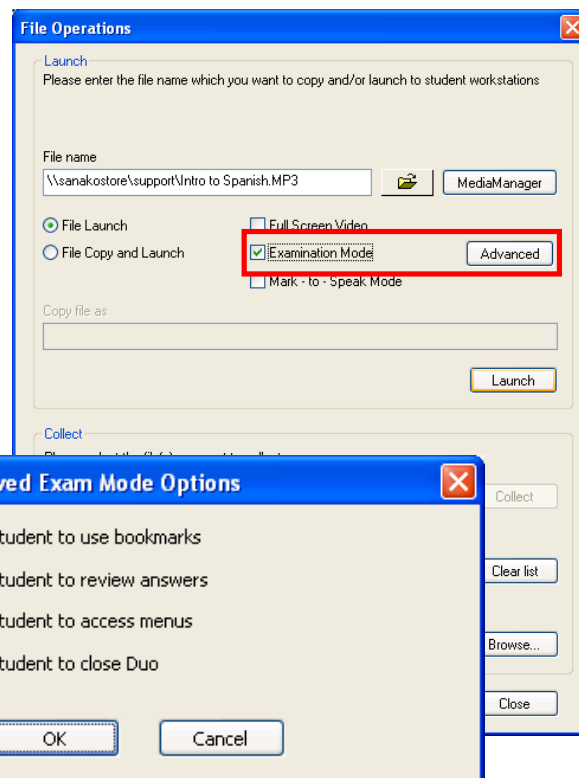
A window will appear (File Operations) with options to browse for a file  which then shows in the 'File name' area.

Within this window, you can choose to select Exam Mode.

'Exam Mode' allows/disallows certain features/functions that may unfairly be used in SANAKO Media Assistant Duo

So what can we allow/disallow?

- Student bookmarks (being able to mark a point in time on a track, so you can browse to it quickly and easily)
- Students to review answers (Rewind/Fast-forward, Recap, Repeat the media file)
- Students to access menus. There are several options within this that you may want to disable here inc. Variable speed (the ability to speed up and slow down the track), Graph view (to look at peaks and troughs in speech), Help (access to the SANAKO web pages and user guide for the software)
- Students to close Duo (if closed, the file may then need to be sent back out to the student and precious time could be wasted)

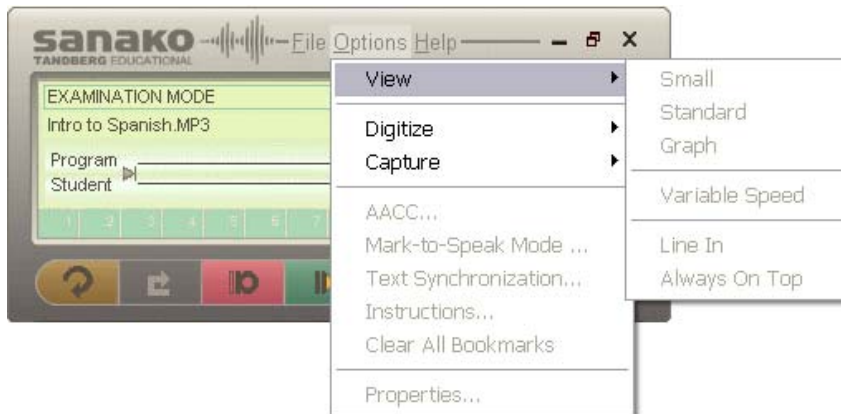


When Exam Mode is selected, the 'Advanced' button becomes active. When pressed, the 'Allowed Exam Mode Options' window appears. Selecting options **ALLOWS** features/functions. When nothing is selected, they are all **DISABLED**. Press OK to confirm.

Clicking on 'Launch' will send the file out.

'Close' will close the 'File Operations' window.

Typical view of SANAKO Media Assistant Duo in Examination Mode.
 Note the change of colours to indicate the features are disabled



The view showing the menus/submenus in Options